

# Complying to the new EN81-28 Regulation for the Emergency Alarm system in a lift

## Introduction

All new lifts which are to be placed in service has to be compliant with EN81. Within this standard, the regulation which applies to Lift Alarms is section 28 which specifically relates to how an Alarm which has been filtered needs to behave. All aspects of the alarm being activated, the method of response and the regular testing have been defined.

Windcrest provides equipment which will comply with the standard in all aspects from the way in which the equipment works on the lift to the Central Station which monitors the regular test calls every three days.

## Basic Requirements

### Alarm Filter

An alarm filter needs to be implemented in the Autodialler so that accidental and nuisance call are prevented.

### Pictograms

A Yellow pictogram has to be activated when the alarm has been validated and the Autodialler triggered.

A Green pictogram needs to be activated when the call has been registered or acknowledged by the recipient of the call.

### Regular Testing

A method needs to be implemented so that the alarm is tested at least every three days. Windcrest has the facility whereby the equipment will carry out an automated test every 70 hours. However, a manual test must be carried out by the Service Engineers on a regular basis.

## Practical Considerations

The first of the requirements is simple to implement from the equipment manufacturer's point of view. However, the Lift Installer needs to carry out additional wiring to include signals for Door Limit, Zone, Lift Run and Filter ON/OFF switch.

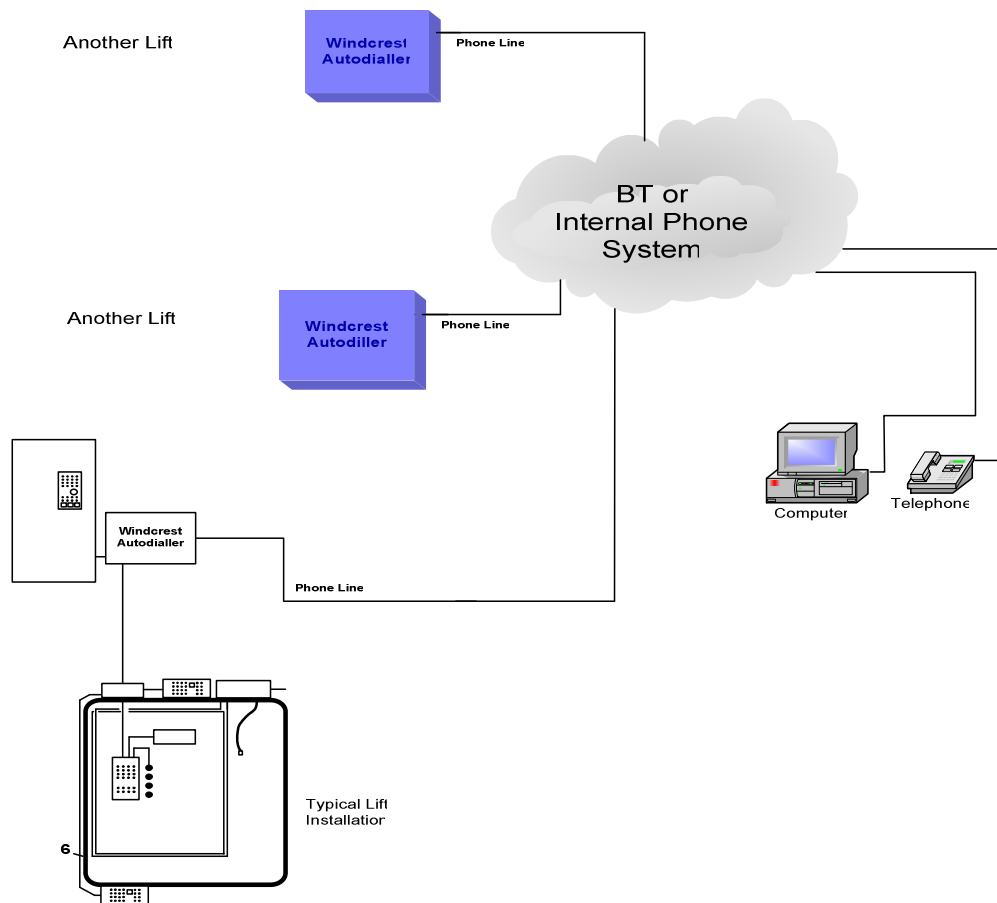
Pictograms are also relatively simple to implement. They can be incorporated on a new car operating panel or a speaker box assembly can be obtained with the pictograms built in.

Regular testing can be implemented in various ways. For example regular testing regime could be implemented by a Security man manually carrying out a test every 3 days. However, this would be practical on a small number of lifts, but would prove to be totally impractical for a large number of lifts. In this situation an automated method of testing would be ideal.

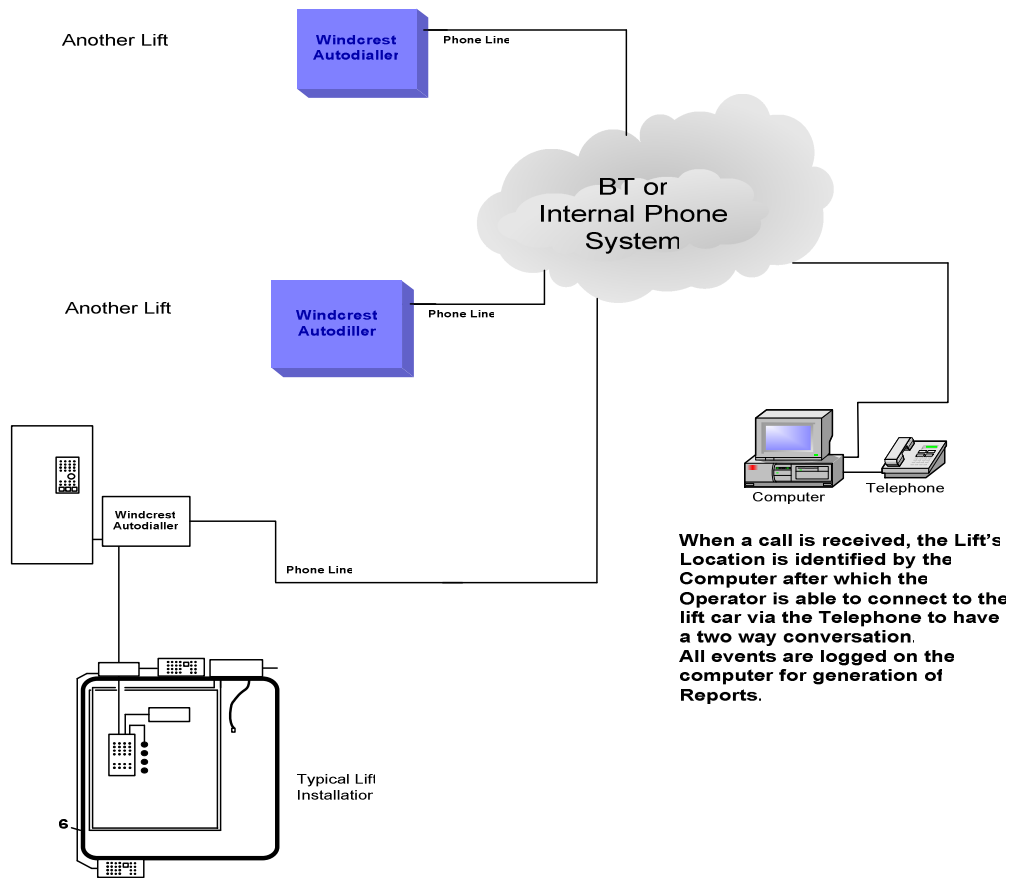
All Windcrest systems have a facility to make an automated test every 70 hours. The test calls need to be received by a PC with a modem operating under a software package written by Windcrest.

The Autodialler checker software, running on a PC under Windows XP/2000 with a modem, is simple to setup and use. Once the lift details have been entered, a Red lift indicates a lift which has not called in the past 3 days, whilst a Green lift indicates a lift which has called in the last three days.

### System Diagram for a Non-Manned Central Station



## System Diagram for a 24/7 Manned Central Station

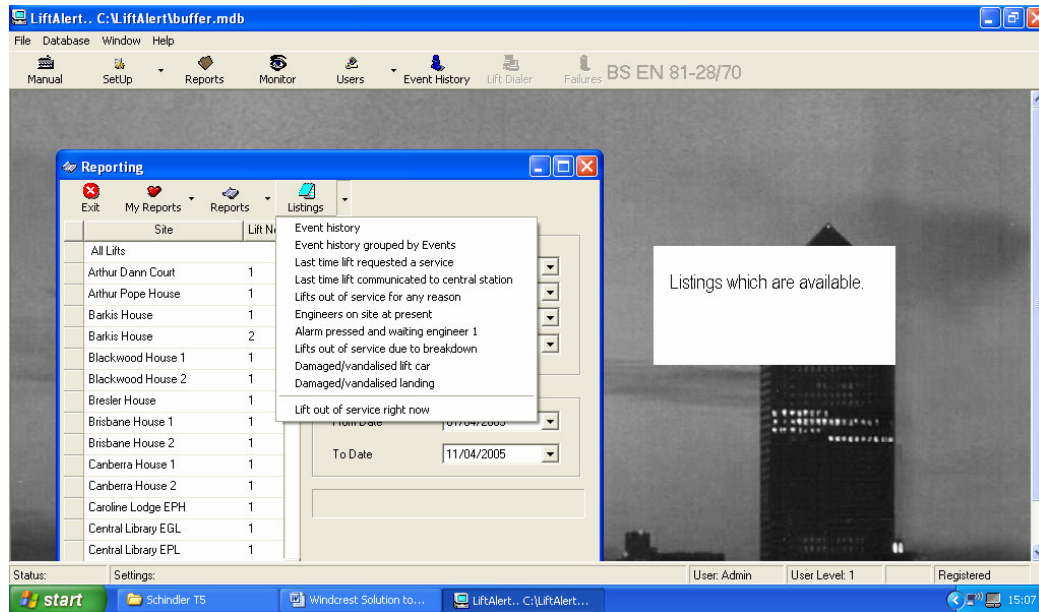


## Central Station Screen Shots of the Monitor Screen

Screen showing overdue lifts which have not called in the past 3 days. ie RED Lifts. If the lifts call, the Lifts will be GREEN and go to the bottom of the list. ie Oldest not reported on top of list.

Status	Site	Lift No	Date/Time
RED	Copperfield House	0	04/04/2002 16:46:55
RED	Grafton Street Block D	1	14/04/2002 04:44:54
RED	Hawthorn Crescent	1	17/04/2002 16:06:18
RED	Central Library EPL 2	1	18/04/2002 13:54:45
RED	Samuel Lodge EPH	1	15/05/2002 15:46:08
RED	Connors Keep	1	09/06/2002 10:08:30
RED	Harry Sobrick House EPH	1	23/08/2002 11:54:51
RED	Civic Offices, C2.3, C2.4	1	30/08/2002 14:41:44
RED	Civic Offices, C2.3, C2.4	2	30/08/2002 14:48:21
RED	Highfield Road	1	01/09/2002 21:29:40

## Central Station Screen Shots of the Monitor Screen



## Central Station System Setup

### Lift Outstations

- All Windcrest Autodialler range supplied by Windcrest (UK) Ltd
- All LiftAlert Managements systems supplied by Windcrest (UK) Ltd
- Drop and Go systems supplied by DP Elektronik AB
- LPBOE systems HSP Electronics Ltd

### Central Station

- IBM Compatible P4 with Windows XP/2000
- 256Mb RAM and 256Mb Hard Drive
- Optional Sound Card
- Voice Modem TAPI
- Windcrest Software