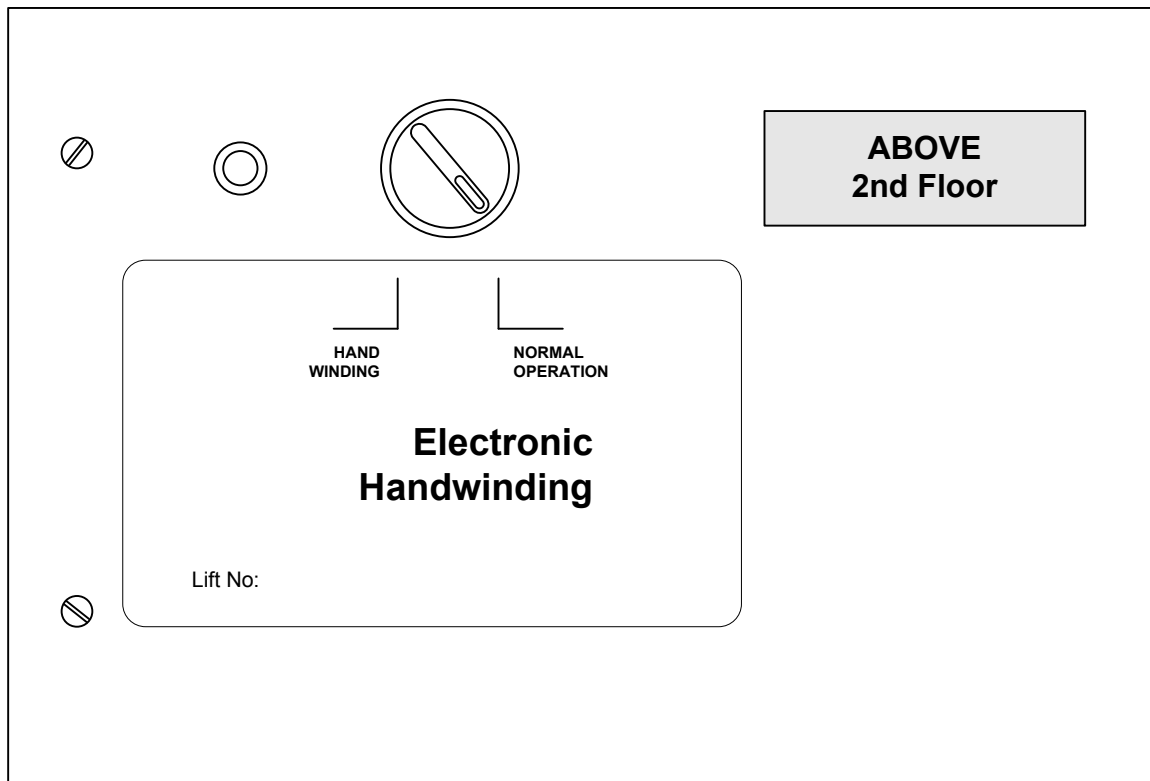


The *Windcrest* Electronic Hand Winding Unit



Application

This unit will allow any person to be informed as to the location of the lift car within the lift shaft.

It will provide the correct floor level designation of the lift car's position or indicate if the car is above or below the specified floor.

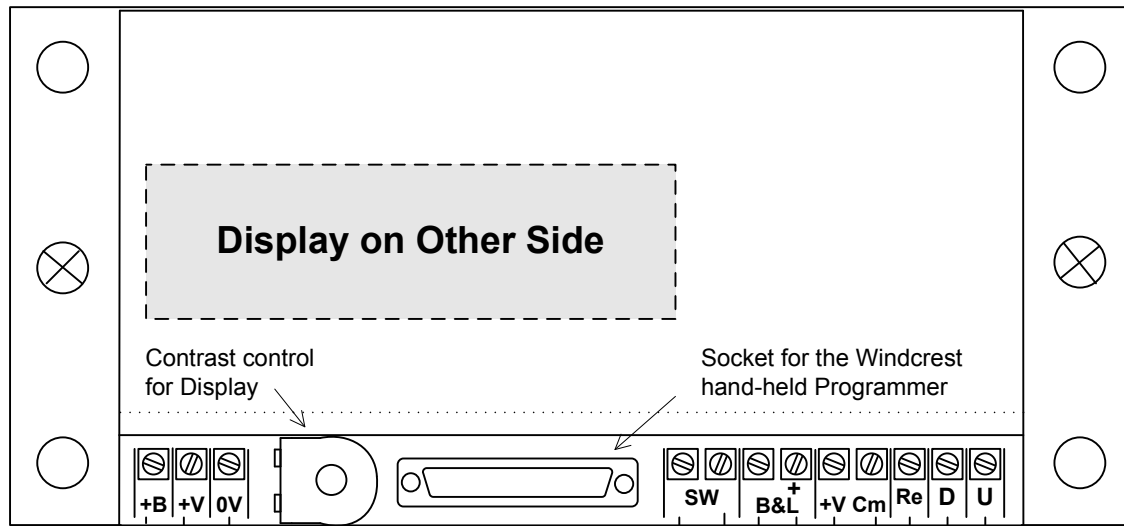
In addition to the Displayed floor position, a conventional Buzzer and Lamp is provided which operate, independently, when the lift is within the doors zone.

Requirements

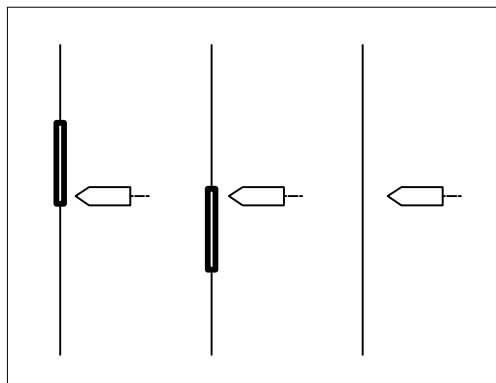
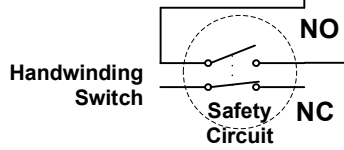
The system requires 3 signals, Up direction, Down direction and a Reference floor. A position Tap Head, an Oscillator or any other transducer can be used.

Basic Specification

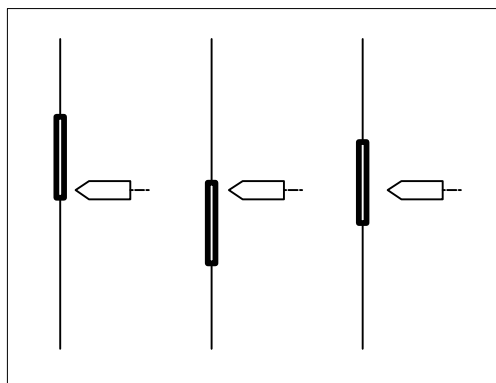
LCD with LED back light
Mains operated 1Amp 230V AC
24V Battery Backed
Can provide power to transducers



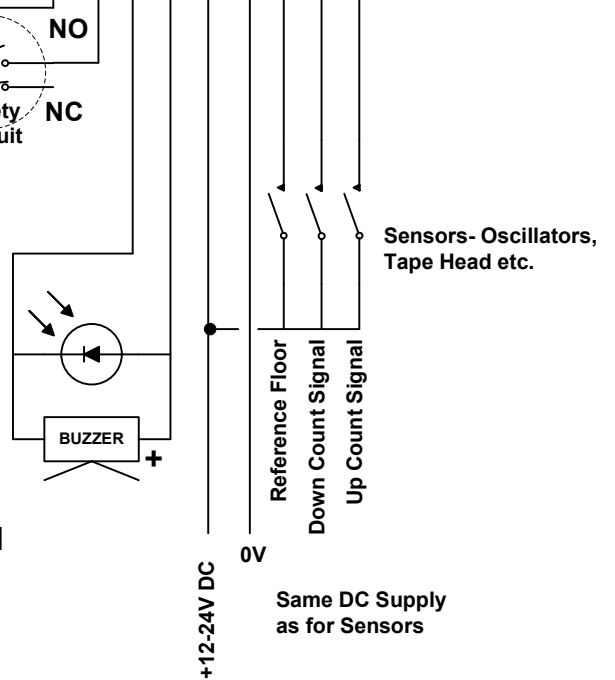
12-24V DC Supply



Down Signal Up Signal Reset/Ref. Signal



Reset/Reference Floor



The Programmable Electronic Hand winding Unit

Drawing: Wiring Diagram V01

Windcrest

Tel: 0208 795 0333
Fax: 0208 795 0444

<u>GRAPHICS:</u>	<u>GRAPHIC</u> <u>Ref Number</u>	<u>GRAPHIC</u> <u>Ref Number</u>	
'BOTTOM OF SHAFT'	:000	' 45th FLOOR '	:068
' MARKER '	:001	' 46th FLOOR '	:069
' SUB-BASEMENT '	:002	' 47th FLOOR '	:070
' BASEMENT '	:003	' 48th FLOOR '	:071
' BASEMENT 10 '	:004	' 49th FLOOR '	:072
' BASEMENT 9 '	:005	' 50th FLOOR '	:073
' BASEMENT 8 '	:006	' LEVEL 1 '	:074
' BASEMENT 7 '	:007	' LEVEL 2 '	:075
' BASEMENT 6 '	:008	' LEVEL 3 '	:076
' BASEMENT 5 '	:009	' LEVEL 4 '	:077
' BASEMENT 4 '	:010	' LEVEL 5 '	:078
' BASEMENT 3 '	:011	' LEVEL 6 '	:079
' BASEMENT 2 '	:012	' LEVEL 7 '	:080
' BASEMENT 1 '	:013	' LEVEL 8 '	:081
' LOWER GROUND '	:014	' LEVEL 9 '	:082
' GROUND FLOOR '	:015	' LEVEL 10 '	:083
' GROUND LEVEL '	:016	' LEVEL 11 '	:084
' UPPER GROUND '	:017	' LEVEL 12 '	:085
' MEZZANINE '	:018	' LEVEL 13 '	:086
' MEZZANINE 1 '	:019	' LEVEL 14 '	:087
' MEZZANINE 2 '	:020	' LEVEL 15 '	:088
' MEZZANINE 3 '	:021	' LEVEL 16 '	:089
' MEZZANINE 4 '	:022	' LEVEL 17 '	:090
' MEZZANINE 5 '	:023	' LEVEL 18 '	:091
' 1st FLOOR '	:024	' LEVEL 19 '	:092
' 2nd FLOOR '	:025	' LEVEL 20 '	:093
' 3rd FLOOR '	:026	' LEVEL 21 '	:094
' 4th FLOOR '	:027	' LEVEL 22 '	:095
' 5th FLOOR '	:028	' LEVEL 23 '	:096
' 6th FLOOR '	:029	' LEVEL 24 '	:097
' 7th FLOOR '	:030	' LEVEL 25 '	:098
' 8th FLOOR '	:031	' LEVEL 26 '	:099
' 9th FLOOR '	:032	' LEVEL 27 '	:100
' 10th FLOOR '	:033	' LEVEL 28 '	:101
' 11th FLOOR '	:034	' LEVEL 29 '	:102
' 12th FLOOR '	:035	' LEVEL 30 '	:103
' 13th FLOOR '	:036	' LEVEL 31 '	:104
' 14th FLOOR '	:037	' LEVEL 32 '	:105
' 15th FLOOR '	:038	' LEVEL 33 '	:106
' 16th FLOOR '	:039	' LEVEL 34 '	:107
' 17th FLOOR '	:040	' LEVEL 35 '	:108
' 18th FLOOR '	:041	' LEVEL 36 '	:109
' 19th FLOOR '	:042	' LEVEL 37 '	:110
' 20th FLOOR '	:043	' LEVEL 38 '	:111
' 21st FLOOR '	:044	' LEVEL 39 '	:112
' 22nd FLOOR '	:045	' LEVEL 40 '	:113
' 23rd FLOOR '	:046	' LEVEL 41 '	:114
' 24th FLOOR '	:047	' LEVEL 42 '	:115
' 25th FLOOR '	:048	' LEVEL 43 '	:116
' 26th FLOOR '	:049	' LEVEL 44 '	:117
' 27th FLOOR '	:050	' LEVEL 45 '	:118
' 28th FLOOR '	:051	' LEVEL 46 '	:119
' 29th FLOOR '	:052	' LEVEL 47 '	:120
' 30th FLOOR '	:053	' LEVEL 48 '	:121
' 31st FLOOR '	:054	' LEVEL 49 '	:122
' 32nd FLOOR '	:055	' LEVEL 50 '	:123
' 33rd FLOOR '	:056	' EMERGENCY EXIT 1 '	:124
' 34th FLOOR '	:057	' EMERGENCY EXIT 2 '	:125
' 35th FLOOR '	:058	' EMERGENCY EXIT 3 '	:126
' 36th FLOOR '	:059	' EMERGENCY EXIT 4 '	:127
' 37th FLOOR '	:060	' EMERGENCY EXIT 5 '	:128
' 38th FLOOR '	:061	' EMERGENCY EXIT 6 '	:129
' 39th FLOOR '	:062	' EMERGENCY EXIT 7 '	:130
' 40th FLOOR '	:063	' EMERGENCY EXIT 8 '	:131
' 41st FLOOR '	:064	' EMERGENCY EXIT 9 '	:132
' 42nd FLOOR '	:065	' EMERGENCY EXT 10 '	:133
' 43rd FLOOR '	:066	' ---- FLOOR '	:134
' 44th FLOOR '	:067	' ++++++ ++++++ '	:135
		' TOP OF SHAFT '	:136

**All Graphic numbers
are 3 Digit**

**All floor Level numbers
are 2 Digit**

**The Programmable Electronic
Hand winding Unit**

Drawing: Graphics Listing V01

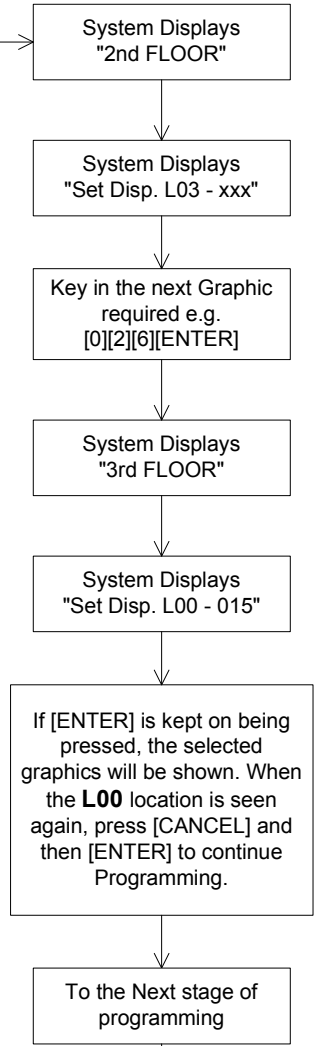
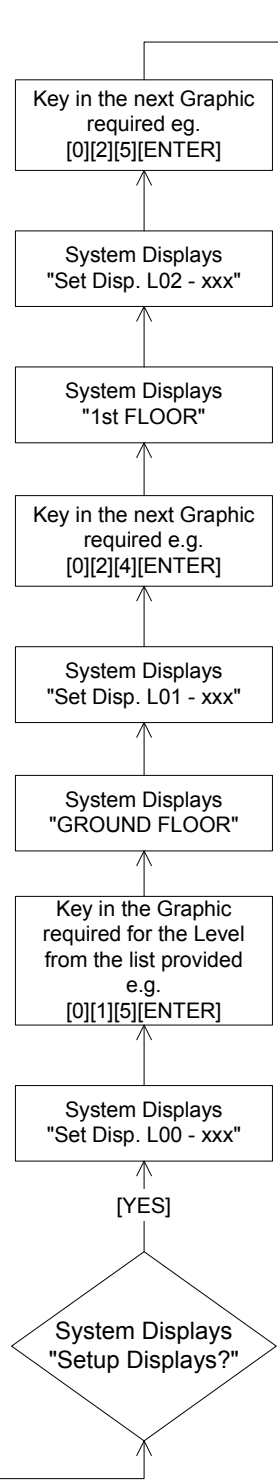
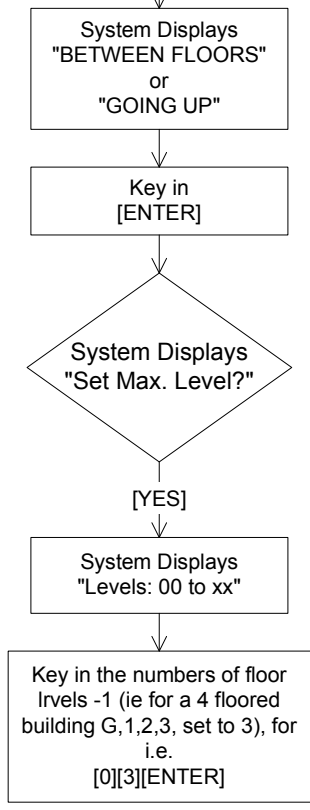
Windcrest

Tel: 0208 795 0333
Fax: 0208 795 0444

Switch the Unit onto NORMAL Operation and Plug the Windcrest Hand-held programmer into the Hand-winding unit via the 15 way D type connector

Power Up the Hand-winding Unit via the Mains or Battery pack. If the display has not initialised, press the [ENTER] key.

On powering up the equipment, the contrast of the LCD display of the Hand-winding unit may change; ignore this as the display of the Hand-held Programmer will be used for programming



to Next Page

All Graphic numbers are 3 Digit
All floor Level numbers are 2 Digit

xx means any digits with the option of over writing/changing [YES] means Key in a Yes on the Programmer

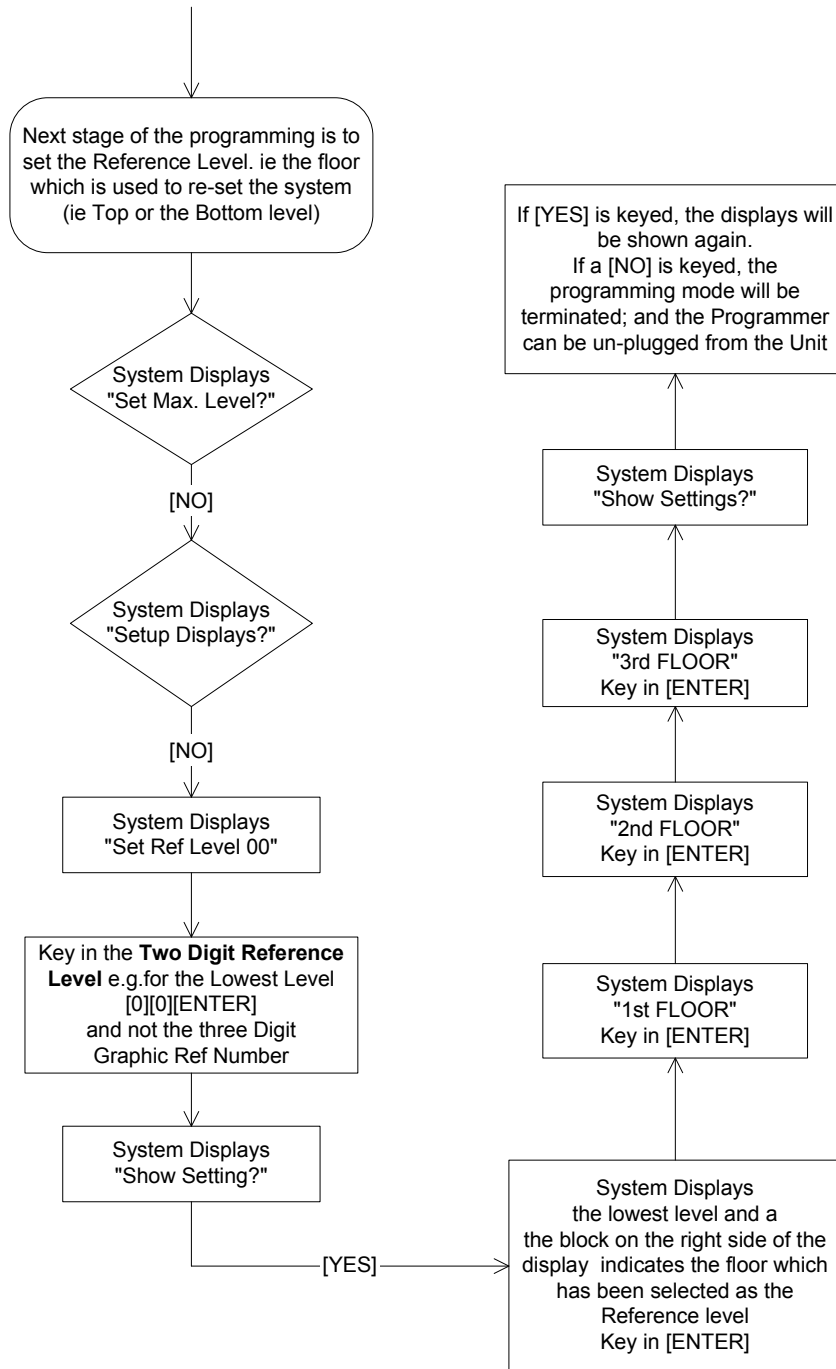
The Programmable Electronic Hand winding Unit

Drawing: Programming FC1 V01

Windcrest

Tel: 0208 795 0333
 Fax: 0208 795 0444

from Previous page



All Graphic numbers are 3 Digit

All floor Level numbers are 2 Digit

xx means any digits with the option of over writing/changing [NO] means Key in a No on the Programmer

The Programmable Electronic Hand winding Unit

Drawing: Programming FC2 V01

Windcrest

Tel: 0208 795 0333
Fax: 0208 795 0444

